

**SUSSEX INLET & BASIN YACHT CLUB INC.**

# **Sailing Instructions**

**St Georges Basin Trailable Yacht Regatta**

**Saturday, February 4 & Sunday February 5, 2012**

**Incorporating Race Three of the YNSW Southern Zone Trailable Yacht Series**

Headquarters; Sussex Inlet Sport and Recreation Club  
end of Jacobs Drive, Sussex Inlet

**Sponsored by**

*Ocean & Earth*

***Supported by Sussex Inlet Tourism***

## 1. Rules and Organising Authority.

The regatta is organised by the SIBYC Inc under the authority of Yachting NSW and governed by the ISAF Racing Rules of Sailing (RRS) for 2009-2012, the prescriptions and special regulations of the AYF, Part 1, Category 7, the Australian Yacht and Sport Boat Rules and the rules of the Trailable Yacht classes (except as any of these are changed by these sailing instructions)

**All yachts shall display sail numbers. Auxiliary engines shall be fitted on their operating brackets whilst racing**

## 2. Eligibility & Entry

The Regatta is open to all boats complying with the Australian Trailable Yacht and Sports boat rules, other boats will be accepted by the Race Committee of the Organising Authority. Eligible boats may enter the regatta in: -

- |            |  |
|------------|--|
| Division 1 | Boats with a CBH equal to and above 0.760.                     |
| 2          | Boats with a CBH equal to and above 0.720 and less than 0.760. |
| 3          | Boats with a CBH less than 0.720.                              |

These divisions may be changed by the committee on registration day if it is deemed necessary, a minimum number of yacht entries may be required to constitute a division.

Entries will also be accepted from trailable multi hulls and ballasted day sailers. Appropriate handicaps will be applied.

**Helmsperson or crew of each boat is required to register their intention to sail in the Regatta at race headquarters or to the committee vessel on channel 94 - 27 megahertz, between 1100 hours & 1200 hours on Saturday, February 4, 2012. Sunday only starters are required to register at HQ by 10am or contact the committee vessel on water as early as possible.**

**If a vessel withdraws from a race after registering at HQ or with the committee vessel, please notify the committee boat by radio, hail or by mobile on 0411 849 818.**

## 3. Notices to Competitors

Notices to competitors will be posted on the noticeboard at the Race Headquarters.

A competitors meeting will be held at Race Headquarters at 1100 hours Saturday, February 4, 2012 only.

## 4. Changes in Sailing Instructions.

Any changes in the Sailing Instructions will be posted on the official notice board and/or relayed by radio if possible up to one hour before the warning signal on the day it will take effect.

## 5. Schedule of Races.

Races will be as scheduled in the regatta as follows:

Race 1 - **Saturday, February 4 - Passage race**

	<b>Warning Signal</b>	<b>Starting Time</b>
Division 1	1255 hrs	1300 hrs
Division 2	1255 hrs	1300 hrs
Division 3	1255 hrs	1300 hrs

**Race 2 - Sunday, February 5 - Outside course**

	<b>Warning Signal</b>	<b>Starting Time</b>
Divisions 1, 2 & 3	1055 hrs	1100 hrs

**7. Class Flags.**

All divisions (1, 2 and 3) class flag is a white flag with a black "T"

**8. Racing Area and Courses**

Races will be conducted on St Georges Basin on courses as described on the attached course sheets and appropriate to the day.

**9. Marks**

Marks 1, 2, 3, 4, 5 and 6 (and A, B and C) will be red or orange buoys. The starting mark will be a red or orange buoy. The finish mark will be a red or orange buoy.

**10. The Start**

Races will be started using Rule 26. On Saturday the course will be indicated by the location of the starting boat. On Sunday the course will be indicated by a red or green flag raised on the starting boat.

The starting line will be between the signal mast on the race committee boat at the starboard end, and the port-end starting mark. An inner distance mark may be laid near the committee boat. When used, yachts shall leave this mark to starboard. The I flag may be used. A boat shall not start later than 15 minutes after her starting signal.

**11. Shortened Course.**

The race committee may shorten the course at a mark in accordance with RRS 32. Code flag 'S' will be displayed.

**12. Recalls**

Individual recalls will be signalled in accordance with RRS 29.1

General recalls will be signalled in accordance with RRS 29.2.

Following a general recall, the 'I' Flag Rule RRS 30.1 will apply.

**13. The Finish**

The finishing line will be between the signal mast on the Committee Boat and the finish mark.

**14. Time Limit**

For the Saturday race there shall be a time limit of 4.5 hours. Should one yacht finish within the time limit yachts will be recorded as finishers up to 5.5 hours from the start of the race. For the Sunday race there shall be a time limit of 3.5 hours. Should one yacht finish within the time limit yachts will be recorded as finishers up to 4.5 hours from the start of the race. In either race, if no yacht finishes within the time limit, the race will be abandoned.

## **15. Protests**

Protests shall be written on forms available from the regatta office and delivered there within 1 hour after the time of the last boat's finish for that division. Protests must be handed to a member of the Race Committee. (Accompanied by a protest fee of \$10.00. Protests will be heard in approximate order of receipt and protest notices will be posted within 30 minutes of the protest time limit to inform competitors where and when there is a hearing in which they are parties to a hearing or named as witnesses.

**16. Scoring** A minimum of 1 race is required to constitute the series.

The Low scoring system, Appendix A will apply. Each boat's score will be the total of her race scores. All scores shall be counted.

## **17. Radio Communication**

Except in an emergency, a boat shall neither make radio transmissions while racing nor receive radio communications not available to all boats. This restriction also applies to mobile telephones.

## **18. Environmental Rule**

Yachts shall not dispose of any item on board the yacht into St Georges Basin.

## **19. Wind Speed**

Should the wind speed be determined to average 25 knots or more during the hour prior to the warning signal, the race may be either postponed or abandoned by the race committee. The committee may delay the start if there is considered insufficient wind 10 min before the start.

## **20. Prizes**

1<sup>st</sup> & 2<sup>nd</sup> prizes will be awarded to the overall winner and runner up in the two-race regatta based on CBH corrected times.

A prize for the first placed boat will be awarded in each division, each day, based on CBH corrected times. A minimum of 1 race is required to constitute the series.

Additional prizes may be awarded, all prizes to be collected at the presentation.

## **DISCLAIMER OF LIABILITY**

Competitors participate in the regatta entirely at their own risk. See rule 4, Decision to Race. The organising authority will not accept any liability for material damage or personal injury or death sustained in conjunction with or prior to, during, or after the regatta.

## **INSURANCE**

Each participating boat shall be insured with valid third-party liability insurance with a minimum cover of \$5,000,000 per event or the equivalent. Boats may be requested to provide a copy of a valid insurance certificate.

## **21 SAFETY REGULATIONS**

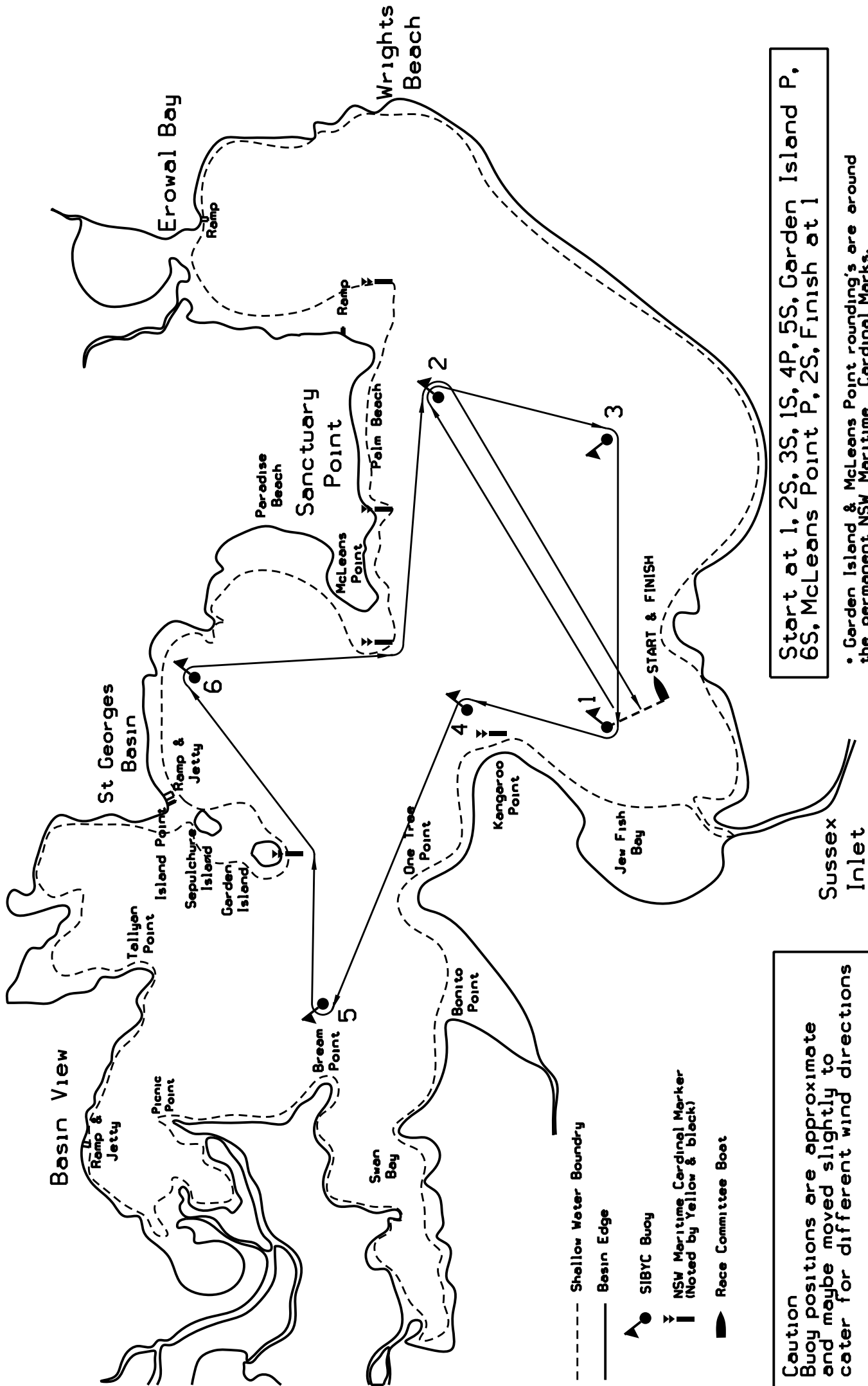
Check-Out and Check-In Procedures: All boats intending to race are to indicate their intentions to the committee boat by radio (channel 27.94 MHz) before the start of each race or by hailing the committee vessel on water well prior to the starting sequence.

21.2 A boat that retires from a race shall notify the committee boat as soon as possible.

## **23 EQUIPMENT AND MEASUREMENT CHECKS**

A boat or equipment may be inspected at any time for compliance with the class rules and sailing instructions.

# REGATTA PASSAGE RACE

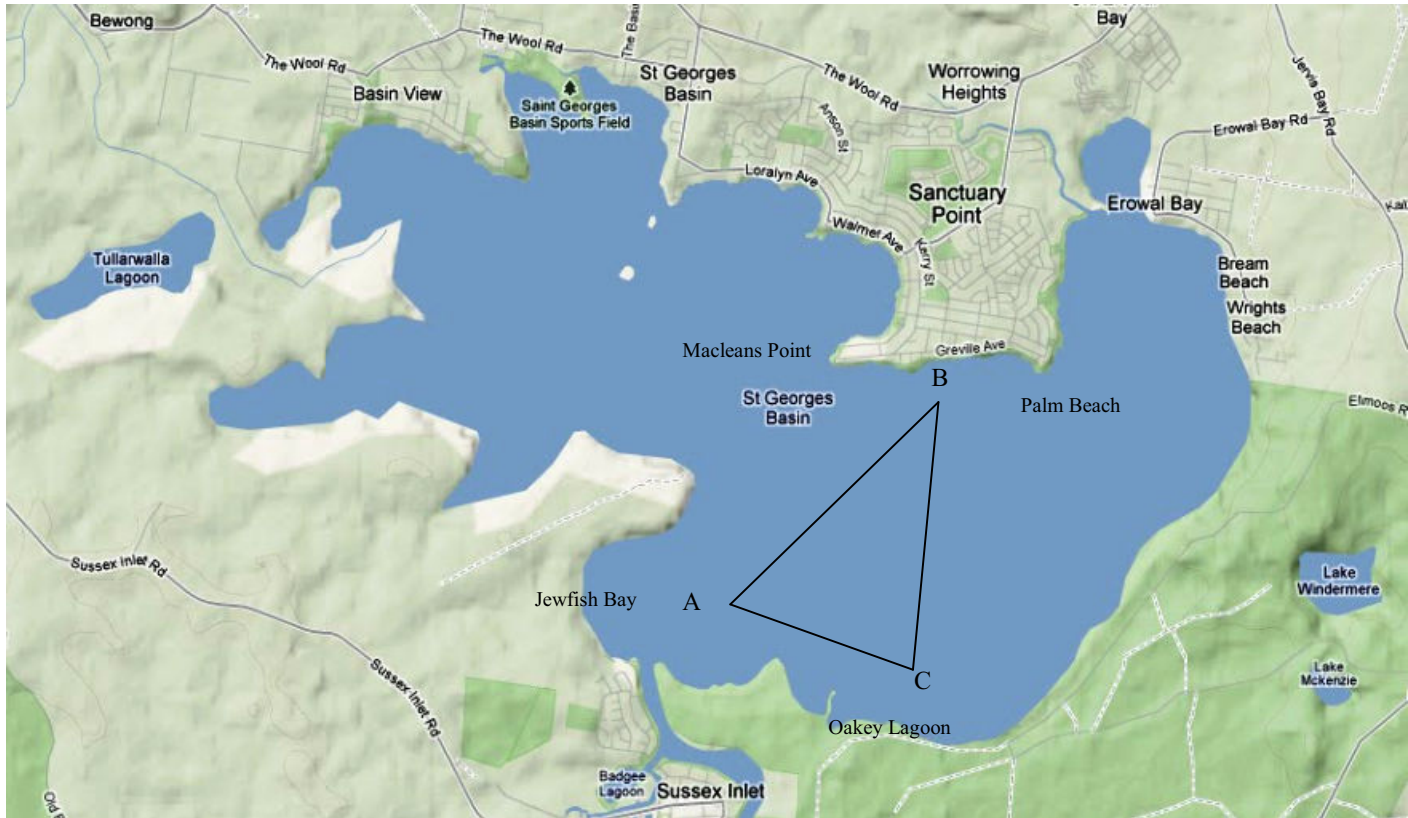


Start at 1, 2S, 3S, 1S, 4P, 5S, Garden Island P, 6S, McLeans Point P, 2S, Finish at 1

Caution  
Buoy positions are approximate  
and maybe moved slightly to  
cater for different wind directions

- Garden Island & McLeans Point rounding's are around the permanent NSW Maritime Cardinal Marks.
- Ensure you round the buoy at Kangeroo Point, as the cardinal mark is not part of the course

## Weekend Outside Course



A – Laid mark, in the vicinity of Jewfish Bay.

B – Laid mark, in the vicinity between Macleans Point and Palm Beach

C – Laid mark, in the vicinity of Oakey Lagoon

Courses will be designated a rounding direction (Port or Starboard) and start Buoy depending on prevailing wind.

All Courses will be Triangle – Sausage – Triangle, work to finish.

A race may be shortened at any mark, with the finish being between the mark and committee boat.

Example: Typical Course for NE Wind: Starboard Rounding Starting at A  
Start A, B,C,A,B,A,B,C,A, Finish B.

Example: Typical Course for SW Wind: Port Rounding Starting at B  
Start B, A,C,B,A,B,A,C,B, Finish A.