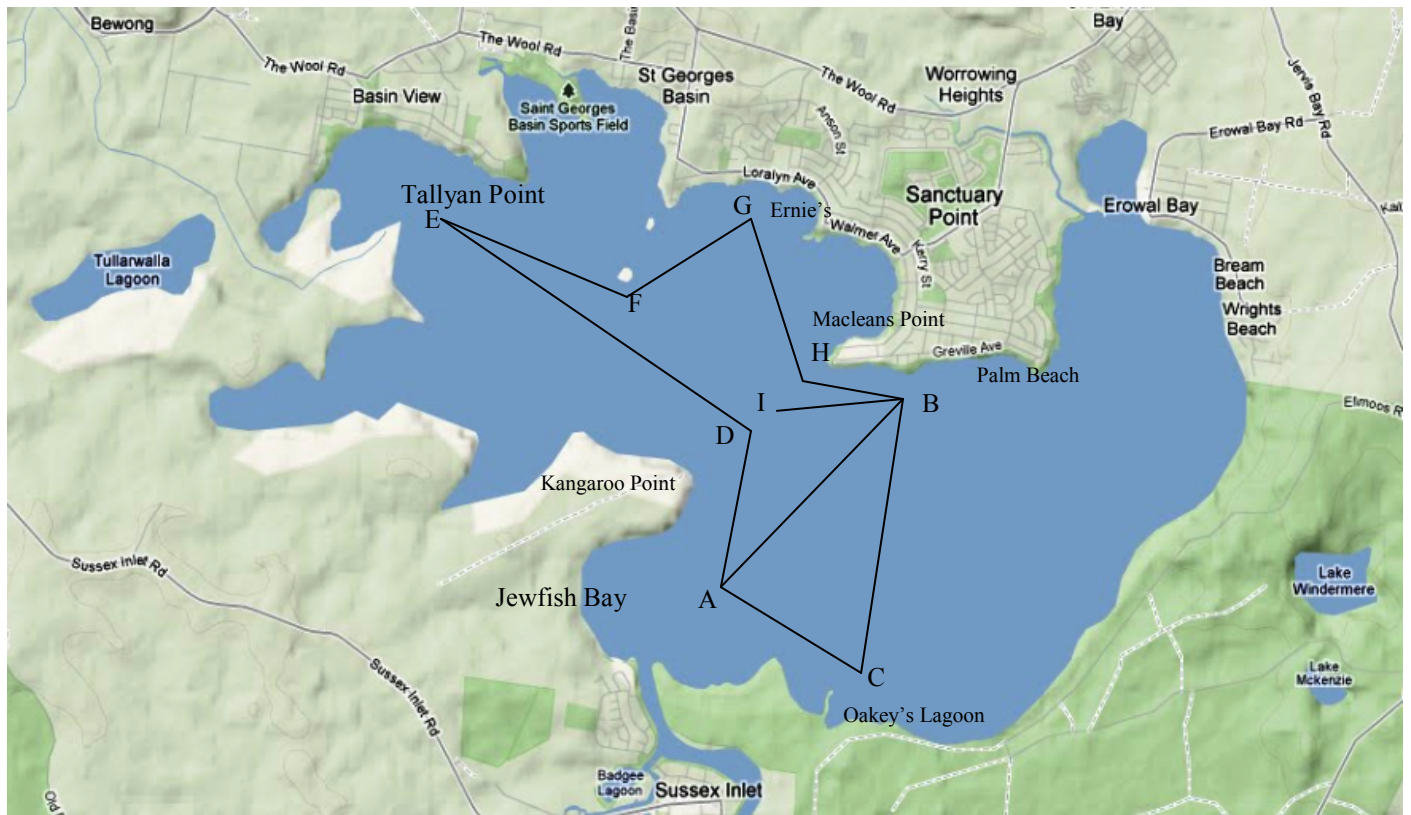


## Weekend Basin Chase



- A – Laid mark, in the vicinity of Jewfish Bay.
- B – Laid mark, in the vicinity between Macleans Point and Palm Beach
- C – Laid mark, in the vicinity of Oakey Lagoon
- D – Laid mark in the vicinity between Kangaroo Point and Maclean's Point.
- E – Laid Mark in the vicinity of Tallyan point.
- F – Cardinal mark off Garden Island.
- G – Laid Mark in the Vicinity of Ernie's
- H – Cardinal Mark off Macleans Point.
- I – Finish Line in the vicinity between Kangaroo Point and Maclean's Point.

Passage race starting at A and Finishing at I for all wind directions.

Course (All marks starboard rounding unless indicated – p)

Start A, B,C,A,D(p),E,F(p),G,H(p),B, Finish at I.