



# Sussex Inlet & Basin Yacht Club Inc.

## Sailing Instructions for 2011/2012 Season

### Management Committee

Commodore	Greg Brown	4443 4339
Vice Commodore	Lynne Arnold	4441 2436
Rear Commodore	Paul Garrard	4443 3133
Secretary	Lynne Spicer	4443 3133
Treasurer	Louisa Fitzgerald	4441 2337

Committee Members	Paul Torney	4441 1326
	Lucy Bell	4443 5436
	Ronda Brown	4443 4339

Trustee	Greg Arnold &	4441 2436
	Greg Brown	4443 4339

Public Officer	Greg Brown	4443 4339
----------------	------------	-----------

### Sailing Committees

#### Weekend

Greg Arnold	4441 2436
Andy Fitzgerald	4441 2337
Peter Booth	4443 8540

#### Midweek

John Aney	4421 7370
Keith Bridge	4421 2824
Paul Garrard	4443 3133
John Jeffree	4443 7053

#### Handicapper / Race Secretaries

Dick Finlayson	4443 0413 and
Tim Finlayson	0403 669 499

#### Handicapper / Race Secretaries

Marie Aney	4421 7370
Joan Jeffree	4443 7053

#### Publicity Officers

Lynne Arnold	4441 2436	Keith Bridge	4421 2824
--------------	-----------	--------------	-----------

## **Sponsors**

The Club values the support of the following businesses and organisations.

### **Sussex Inlet RSL Club**

**[www.sussexrsl.com.au](http://www.sussexrsl.com.au)**

Jacobs Drive Sussex Inlet

### **Talking Technology**

**0402 907 607**

Andy Fitzgerald

### **Revolution Sails & Covers**

**[adrianjmills1@bigpond.com](mailto:adrianjmills1@bigpond.com)**

**1/34 Quins Lane South**

**Nowra**

**Ph 44221344 Mob**

**0410611593**

### **James Leavers Mobile Mechanical**

**Mob 0438 285 706**

12 Cygnet Close Cudmirrah

### **Ocean & Earth Australia Pty Ltd**

**[www.oceaneearth.com.au](http://www.oceaneearth.com.au)**

Springs Road Sussex Inlet

### **Peter Booth Designer Boats**

**[www.designerboats.com.au](http://www.designerboats.com.au)**

Greville Ave Sanctuary Point

### **Sussex Inlet Chamber of Commerce and Tourism**

## **Notice of Season's Events**

The Sussex Inlet-Basin Yacht Club inc. invites entries from Trailable Yachts, Ballasted Day Sailors and Trailable Multi Hulls for the 2011/2012 season of events to be conducted on St. Georges Basin.

**Rules.** The races will be governed by the *ISAF Racing Rules of Sailing 2009-2012* and the Prescriptions and Special Regulations of the AYF .

**Eligibility.** All yachts owned by financial members of S.I.B.Y.C. who have paid race entry fees and shown proof of comprehensive insurance and YA membership will be eligible to compete and will gain points in the various Series.

**Visitors** (Not existing members) are welcome and may sail up to 3 races but will not be awarded points.

**Entries & Fees.** To enter yacht owners must complete the membership/entry form, attach proof of current comprehensive insurance and pay the prescribed fees for the season by the 30<sup>th</sup> September 2011. Membership fees and half the race fees may be paid by the due date with the balance paid by the 31<sup>st</sup> January 2012

A personal membership will lapse in a season if fees, together with a reasonable explanation for late payment, are not tendered to the Committee by 31<sup>st</sup> March.

**No points will be awarded to boats that are unfinancial after the 31<sup>st</sup> October 2011 or visitors.**

All entrants agree to be bound by the racing rules of the ISAF and by all other rules that govern the events and:

“The decision to race places the sole responsibility for deciding whether or not to start or to continue racing on the yacht skipper”

The Management Committee reserves the right to refuse any entry and need not give any reason for doing so.

<b><u>Radio Frequencies</u></b>	27.980 M.Hz	Rescue Organizations
	27.940 M.Hz	Club events
	27.88M.Hz	Primary distress & calling only
	27.86M.Hz	Secondary distress and safety

**Measurements** Yachts may be measured and or safety equipment inspections may be conducted at the discretion of the Club.

**Scoring** The low point system will apply.  
Boats which opt to sail in a 6 race series will be scored as an entrant for that series.  
Boats which opt to sail 6 randomly selected races over the season will not be scored as an entrant in any series

**Program** *See separate sheet.*

### **Weekend Events Summary**

**Basin Chase Series** – 3 handicap and 3 scratch races programmed 5 to count based on PBH results.

**Outside Series** – 3 handicap and 3 scratch races programmed 5 to count based on PBH results.

**Inside Series** – 3 handicap and 3 scratch races programmed 5 to count based on PBH results.

**Short Course Series** - over 2 days (6 races) all to count based on CBH results.

**Weekend Point Score Trophy** -5 races from each series to count based on PBH results.

**Weekend Club Champion**-7 races to count from the 9 scratch starts [based on CBH results.](#)

### **Midweek Events Summary**

**Handicap Start Series** – 6 races programmed 5 races to count based on PBH results.

**Gate Start Series 1-** 6 races programmed 5 to count based on PBH results

**Gate Start Series 2 (spinnaker)** - 6 races programmed 5 to count based on PBH results and CBH results

**Midweek Point Score trophy** -5 races from each of the 3 series to count based on PBH results.

**Midweek Club Championship** 5 races from the gate start series 2 to count based on CBH results

### Trophies

Trophies will be awarded to the successful boats in the above-mentioned events.

“The American’s Cup” will be awarded to the weekend Club Champion.

A prize will be awarded to the winner in each race of the above mentioned events based on PBH results. Boats entered in random series will be eligible for daily prizes but will not be included in series points score.

### Duty Boat

A boat, which is entered in a series of races and is rostered to act as the Starter’s Committee boat for any race in the series shall be awarded points for equal 4<sup>th</sup> place in that race. For mid week gate start series, the 4<sup>th</sup> boat on PBH in the previous race will be the gate boat if available

### Handicaps

The minute system of handicapping will be used for midweek events. The “Top Yacht” program will be used for weekend events to produce a PBH rating for each boat. For the Basin Chase, handicap start times will be calculated based on a 2.5 hr race length. PBH rating will be averaged over the three previous races with maximum adjustment limited to 4% of a boats rating.

Handicaps and start times will be determined by the Sailing Committee based on the average performance of the previous seasons racing. A boat new to the club will have its PBH determined by the Sailing committee and, after the first completed race, its handicap will be adjusted manually or automatically based on performance.

The owner of a boat that has been modified since its last race with the Club must advise the Sailing Committee of the modifications made. The Committee will then decide if there should be any change to its handicap.

During the season a skipper may apply to the Sailing Committee in writing for a review of the boat’s handicap based on its performance. The Sailing Committee itself may review and manually adjust handicaps based on a boat’s performance. The Handicapper may review all personal handicaps at regular intervals during the season and may take into account the number of boats in the various events and adjust handicaps for any drift of fleet handicaps and recommend any changes to the Sailing Committee. Objection in writing should be addressed to the Sailing Committee for adjudication.

Any modification proposed to be made to a boat’s rig or hull during the season must be submitted to the Management Committee in advance of the modified boat being sailed in any Club event so that the boat’s handicap may be reviewed.

The Timpenny non spinnaker CBH is .670

For the midweek series there will be a separate handicap for:

- (1) Gate Start Series1 and Handicap Start Series and
- (2) Gate Start Series2. (a CBH result will also be calculated)

The following adjustments will apply:

Place	1 <sup>st</sup>	2 <sup>nd</sup>	3 <sup>rd</sup>	4 <sup>th</sup>	5 <sup>th</sup>	6 <sup>th</sup>	7 <sup>th</sup> to last
Adj	+3 min	+2 min	+1 min	0 min	-1 min	-2 min	-3 min

**Race Days** Post race analysis BYO refreshments and camaraderie midweek at John & Joan Jefrees.  
**Socials** 87 Walmer Ave Sanctuary Point

Weekend campouts are also held on an adhoc basis in around the basin. Activities include BBQs sports and fishing comps. Contact Greg Arnold or Greg Brown for further details.

## **Sailing Instructions**

All yachts taking part in Club events do so at their own risk, the Committee and the Sussex Inlet Basin Yacht Club Inc do not accept any responsibility for the sea worthiness of any yacht, or the sufficiency or adequacy of its skipper. It shall be the sole responsibility of each yacht skipper to decide whether or not to start or to continue to race.

All events run by SIBYC inc on St Georges Basin are Category 7 under the standards of SI (Cat 7). A self-audit form is included in the entry form for your use.

### **1. Rules and Organising Authority.**

The season's sailing is organised by the SIBYC and governed by the Racing Rules of Sailing (RRS) for 2009 - 2012, the prescriptions and special regulations of the AYF, special Regulations, Part 1 the rules of the Trailable Yacht classes and except as any of these are changed by these sailing instructions.

All yachts shall display sail numbers. In all Midweek events personal buoyancy shall be worn at all times whilst racing, except when inside the cabin. For Weekend events the wearing of personal buoyancy at all times whilst racing except when inside the cabin is strongly recommended. It is each Skipper's responsibility to ensure the safety of the boat's crew. Auxiliary engines shall be fitted on their operating brackets whilst racing.

### **2. Eligibility and Entry**

The Club events are open to yachts that have entered and paid fees. Visitors are welcome and may sail up to 3 races but will not be awarded points.

All yachts shall indicate their intention to participate in an event by reporting to the Starter advising the number on board prior to the start time. **Yachts intending to sail in an event shall advise the relevant Race Secretary at least 2 hours before the advertised starting time of their intention to sail (having regard to the weather and the weather forecasts for the day).**

**A race may be postponed to another day or abandoned unless at least 5 yachts have advised their intention to sail.**

### **3. Notices to Competitors**

For Midweek Events

Competitors will be notified by notice placed on the notice board at 87 Walmer Ave Sanctuary Point or by e-mail or posted to the owners address.

For Weekend Events

Competitors will be notified by mail to the boat owner's address, e-mail or the website.

For Midweek, abandoned races will be re-sailed on the next programmed lay day. For Weekend abandoned races they will be sailed the next appointed lay day.

### **4. Changes in Sailing Instructions**

Any changes in sailing instructions prior to the start of the race may be signalled from the Committee Boat by displaying of Code Flag "L". All boats should come within hail to receive the alterations orally. These may also be transmitted on 27.94 MHz

### **5. Schedule of Events**

The schedule of events is set out on a separate Calendar. The type of starting is shown on the Calendar. Scheduled starting times for the various events are as follows: -

Midweek events	Scheduled starting time	1300 hours
Saturday events	Scheduled starting time	1300 hours
Sunday events	Scheduled starting time	1100 hours unless otherwise advised.

## 6. Sail Restrictions

For midweek events, Spinnakers may only be flown in the gate start series 2.

## 7. Class Flag

The Class Flag is a white flag with a black T

## 8. Racing area & Courses

Races will be conducted on St Georges Basin on courses as described in Appendix A attached. Buoy position may be varied slightly to suit prevailing wind conditions.

**Midweek Events:** The course to be sailed on the day will be advised by radio  
Midweek courses may be varied during the season by the issue of notice to competitors

**Inside Events:** The Committee Boat will fly a green flag to indicate all marks to be passed on the starboard hand or a red flag indicating all marks to be passed on the port hand. The Committee Boat at the starting line will indicate the course to be sailed.

**Basin Chase Events:** Course details in Appendix A and the location of the Committee boat will indicate the start line.

**Short Course and Outside Events:** Location of the Committee boat at the starting line will indicate the course to be sailed. The Race Committee will decide the course to be sailed on the day.

## 9. Marks

Marks will be red or orange buoys. The starting mark will be a red or orange buoy. The finish mark will be a red or orange buoy.

## 10. The Start

Races will start in accordance with Rule 26.

Warning Signal (5 minutes to start) Class flag (white flag with black T) & 1 sound signal

Preparatory Signal (4 minutes to start) - Flag P (blue with white centre) & 1 sound signal.

Preparatory Signal (1 minute to start) - Flag P removed & 1 long sound signal.

Starting-Class Flag removed & 1 sound signal.

Scratch Start - All boats will start at the start signal.

Handicap Start - Boats will start at a time equal to the start signal time plus the boat's individual handicap. Each boat's start time will include a sound signal.

The Committee Boat has the ability to adjust the starting times so that the low handicap boat becomes the scratch boat and the other boats' start times are adjusted accordingly.

## 11. Starting Lines

Midweek events: Starting line for handicap events will be between Buoy No 3 and the flag staff on shore.

Gate Start Races: The Gate Start Boat will fly code flag G (blue & yellow vertical stripes) on its starboard main stay. At the start time the gate Start Boat will sail past the designated starting mark on Port Tack showing a hand held P flag. It will sail on this close-hauled port tack for 1 minute and drop a buoy, which marks the end of the starting line. All other boats will start on starboard tack across the stern of the gate Start Boat and between it and the designated starting mark.

Saturday & Sunday Events: The starting line will be between the signal mast on the Committee Boat at the starboard end and the port end mark. An inner distance mark may be laid near the Committee Boat. When used, yachts shall leave this mark to starboard. A boat shall not start later than 15 minutes after her starting signal. Gate start may be used for other events and will be notified in the sailing programme or in accordance with item 4, "Changes in sailing instructions."

## 12. Shortened Course or Abandoning after the Start

In accordance with RRS 32.2 the Race committee may shorten course at any mark of the course. Code Flag S will be displayed and 2 sound signals made. Races may be abandoned before or after the start in accordance with Rule 27.3 or 32.1(a), (b), (c), (d) or (e). If the committee boat is not on station, boats shall pass within 3 boat lengths of the mark from the direction of the last rounding.

## 13. Recalls

Individual recall will be signalled in accordance with RRS 29. 1. – an early starter may also be advised by radio  
General recall will be signalled in accordance with RRS 29. 2  
Following a general recall the I Flag Rule RRS 30.1 will apply.

#### **14. Finishing line**

Midweek Events: The finishing line will be between Buoy No 3 and the flagstaff on shore.

Weekend Events: This will be between the designated buoy in the course instructions and the flagstaff of the Committee Boat. If the occasion arises where there is no Committee Boat on station at the finish line then all boats must finish by passing the finish buoy on the hand designated and within three boat lengths of the buoy. The boat's crew must record its finish time.

#### **15. Time Limit**

Each yacht will have 3 hours plus its PBH handicap allowance to sail the course. If it does not complete the course in this time it will be recorded as DNF except for Short Course races where the first boat must complete the course in 45 minutes. The remainder must finish within 60 minutes of the starting time otherwise the boats will be recorded as DNF.

#### **16. Protests**

All protests must be in writing.

**Protest Time Limit:** A protest must be handed to a Sailing Committee Member at Sussex Inlet or St Georges Basin within 2 hours of the last boat finishing. The time will be extended if no Committee Member is available. A fee of \$5 must be paid when the protest is lodged.

#### **17. Radio Communication.**

A boat shall neither make radio transmissions while racing nor receive radio communications not available to all boats. (Radio transmissions on frequencies listed in the notice of race are deemed to be available to all boats) This also applies to the use of mobile phones.

#### **18. Environmental Rule**

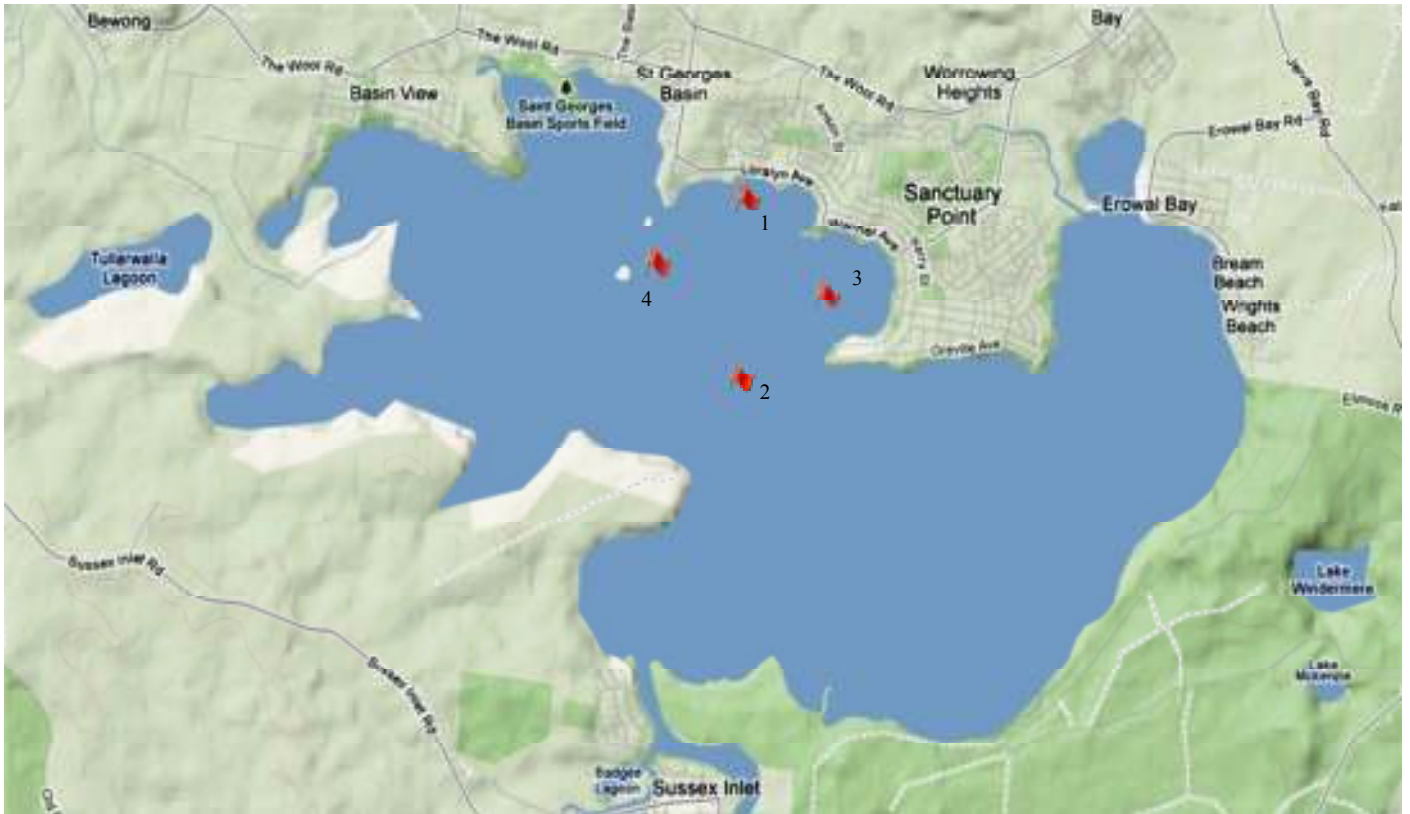
Yachts shall not dispose of any item on board the boat into St Georges Basin.

#### **19. Wind Speed.**

Should the wind speed be determined to gust 20 knots or more for Midweek events and 25 knots or more for Weekend events during the hour prior to the warning signal the event may, at the discretion of the sailing committee, be either postponed or abandoned by the Sailing Committee/Race Officer. Also if there is less than 3 knots of wind prior to the warning signal the start may, at the discretion of the sailing committee, be delayed, postponed or the race abandoned by the Race Officer /Sailing Committee.

# Appendix A

## Thursday Gate Start Champion Series 1 and 2



Start Buoy will be set Leeward of mark 1 for a N.E. Course, N Course & N.W. Course.

N.E. Course Start ½ Km SW of 1, 1S, 2P,3P,1P, 4P,2P,1P, 4P,2P,3P,1P, 4P,1S, finish at 3S

N. Course Start ½ Km S of 1, 1S,3S, 2S,1P, 4P,2P,1P,4P,2,P 3P,1P,2P, 1S, **Fin at 3S**

N.W. Course Start ½ Km SE of 1, 1S, 2S, 4S,1S, 3S, 2S, 1S, 3S,2S,4S,1S, finish at 3S

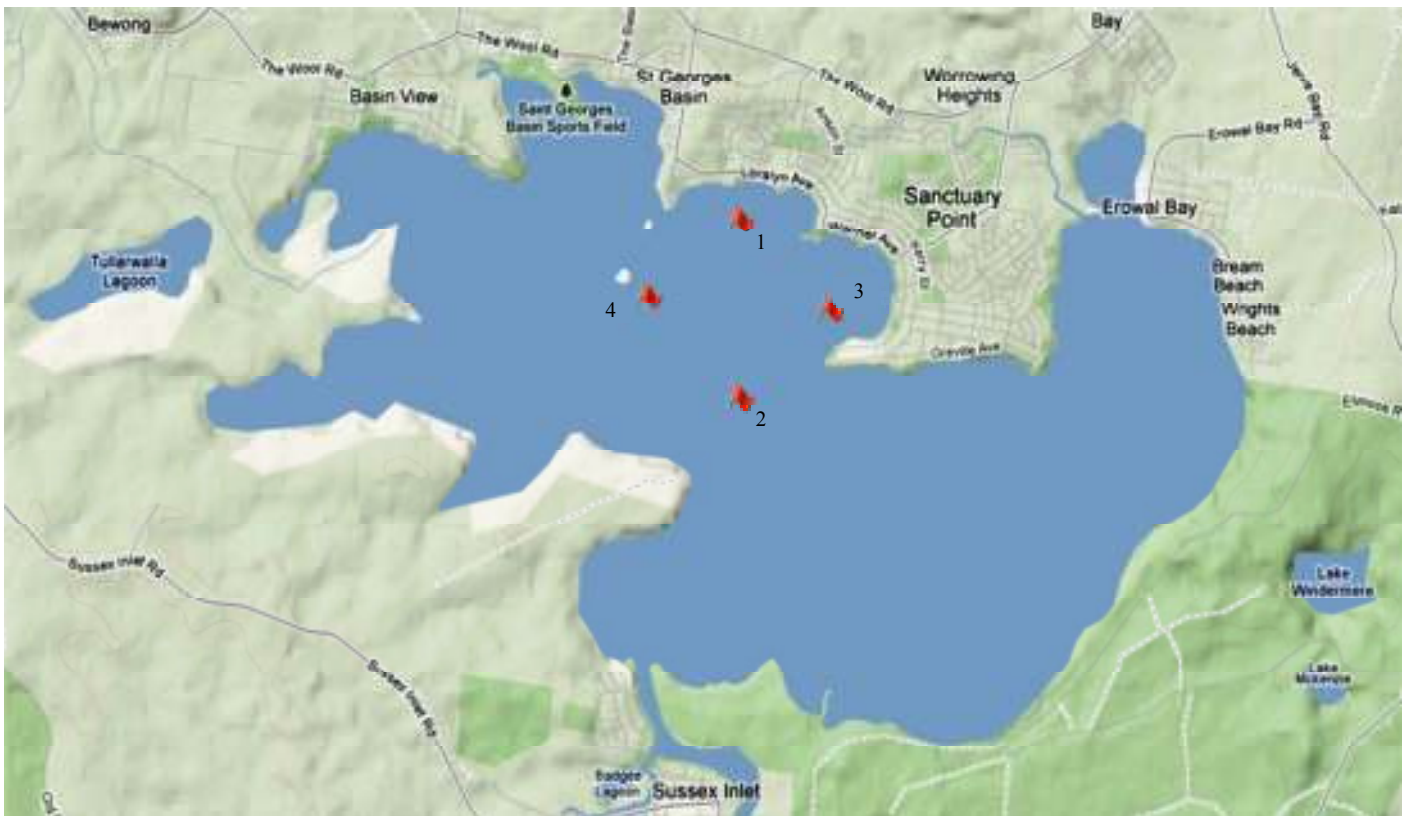
W Course Start ½ Km SSW of 3, 4S,1S, 3S, 4S, 1S, 3S, 2S, 4S, 1S, finish at 3S

S.E. Course Start at 1, 3S,2S, 1P,4P,2P, 1P,4P,2P,3P, 1P,3P, 1P, finish at 3S

S. Course Start at 1,2P,1P,4P, 2P ,1P, 2P,3 P,1P,2P,1S, finish at 3S

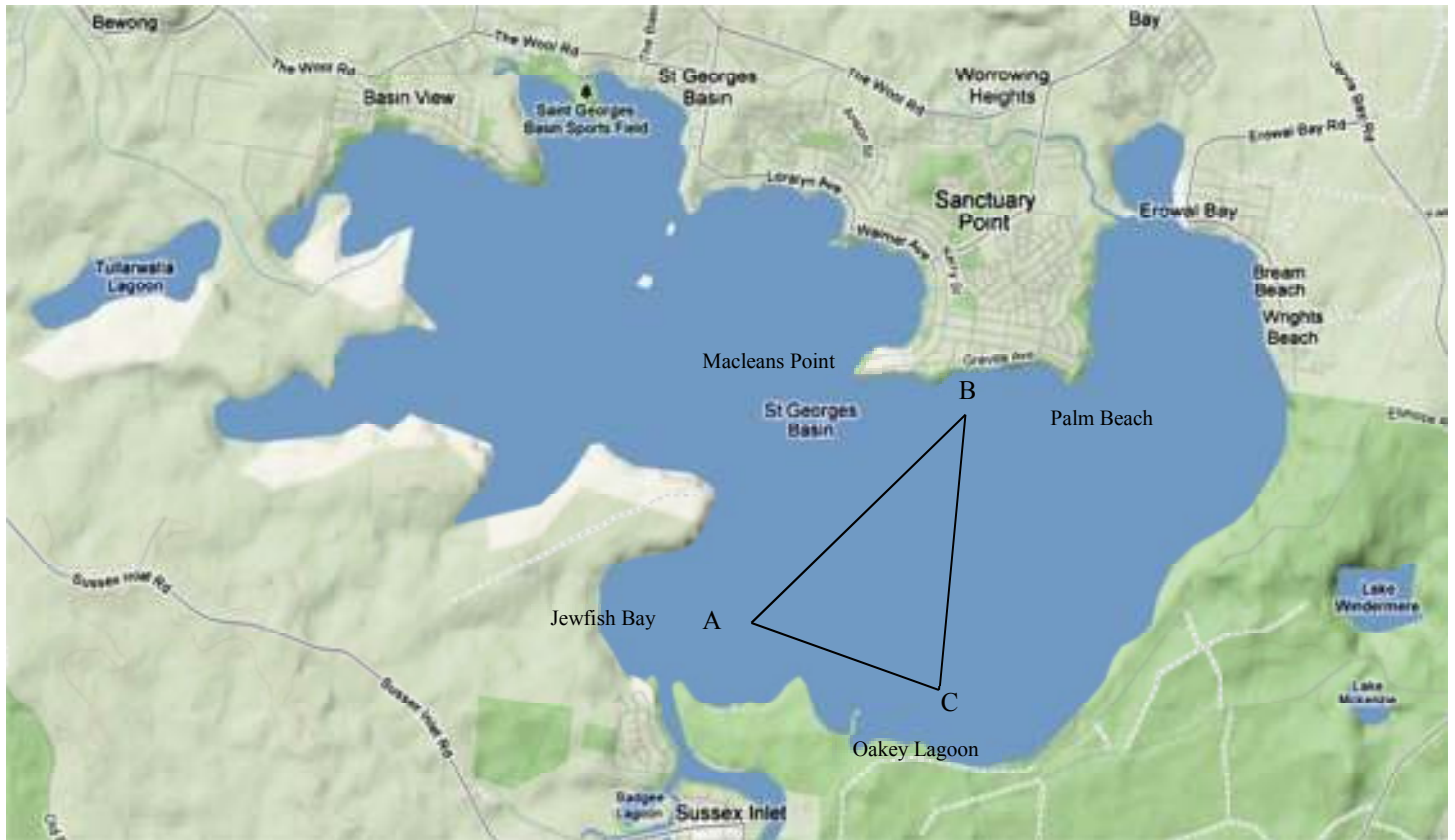
S.W. Course Start at 3, 2S, 4S, 3P,1P, 4P, 3S, 2S, 4S, 1S ,3S, 2S, finish at 3S

## Thursday handicap Series



- N.E Start at 3P, 1P,2P, 1P, 4P, 1P, 4P 2P, 3P, 1P, 4P,2P, finish at 3S
- N Start at 3P, 2S, 1S, 3S, 4P, 2P, 1S, 3S, 2S, 1S finish at 3S
- W Start at 3P, 4S, 1S, 3S, 4S, 1S, 3S 1P, 2P, finish at 3P
- SW Start at 3P, 1P, 4P, 1S, 2S, 1S, 3S, 2S, 1S, 3S, 2S, finish at 3P
- S Start at 3P, 1P,2P,1P, 2P, 1P, 4P, 2P, 3P, 1P, 2P, finish at 3S
- SE Start at 3P, 1P,2P,1P, 4P, 2P, 4P, 2P, 3P, 1P, 3P, 1P, finish at 3S

## Weekend Outside Course



A – Laid mark, in the vicinity of Jewfish Bay.

B – Laid mark, in the vicinity between Macleans Point and Palm Beach

C – Laid mark, in the vicinity of Oakey Lagoon

Courses will be designated a rounding direction (Port or Starboard) and start Buoy depending on prevailing wind.

All Courses will be Triangle – Sausage – Triangle, work to finish.

A race may be shortened at any mark, with the finish being between the mark and committee boat.

Example: Typical Course for NE Wind: Starboard Rounding Starting at A  
Start A, B,C,A,B,A,B,C,A, Finish B.

Example: Typical Course for SW Wind: Port Rounding Starting at B  
Start B, A,C,B,A,B,A,C,B, Finish A.

## Weekend Inside Course



A – Laid mark, in the vicinity of Garden Island

B – Laid mark, in the vicinity of Ernie's

C – Laid mark, in the vicinity between Macleans Point and Kangaroo Point

Courses will be designated a rounding direction (Port or Starboard) and start Buoy depending on prevailing wind.

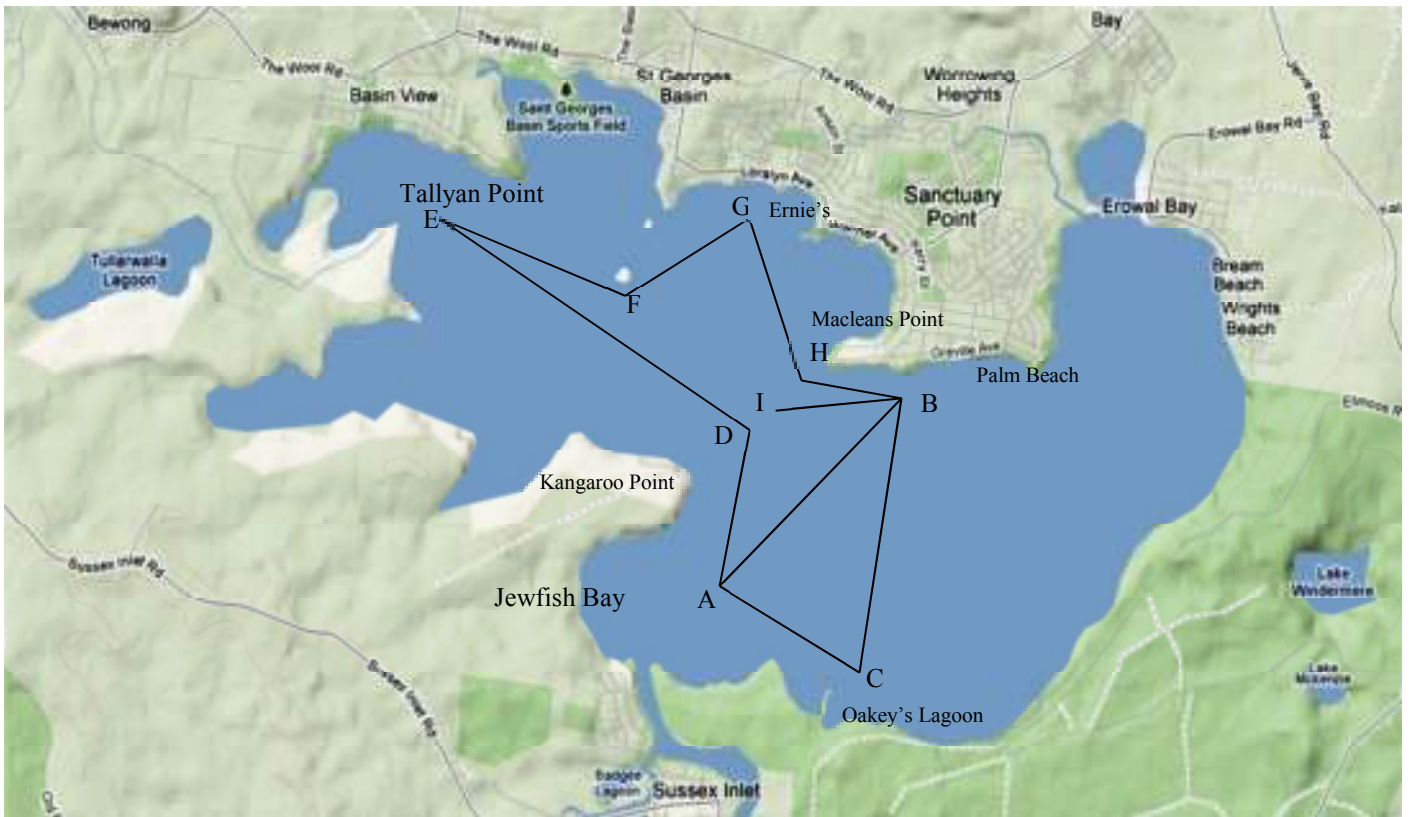
All Courses will be Triangle – Sausage – Triangle, work to finish.

A race may be shortened at any mark, with the finish being between the mark and committee boat.

Example: Typical Course for NE Wind: Starboard Rounding Starting at A  
Start A, B,C,A,B,A,B,C,A, Finish B.

Example: Typical Course for SW Wind: Port Rounding Starting at B  
Start B, A,C,B,A,B,A,C,B, Finish A.

## Weekend Basin Chase



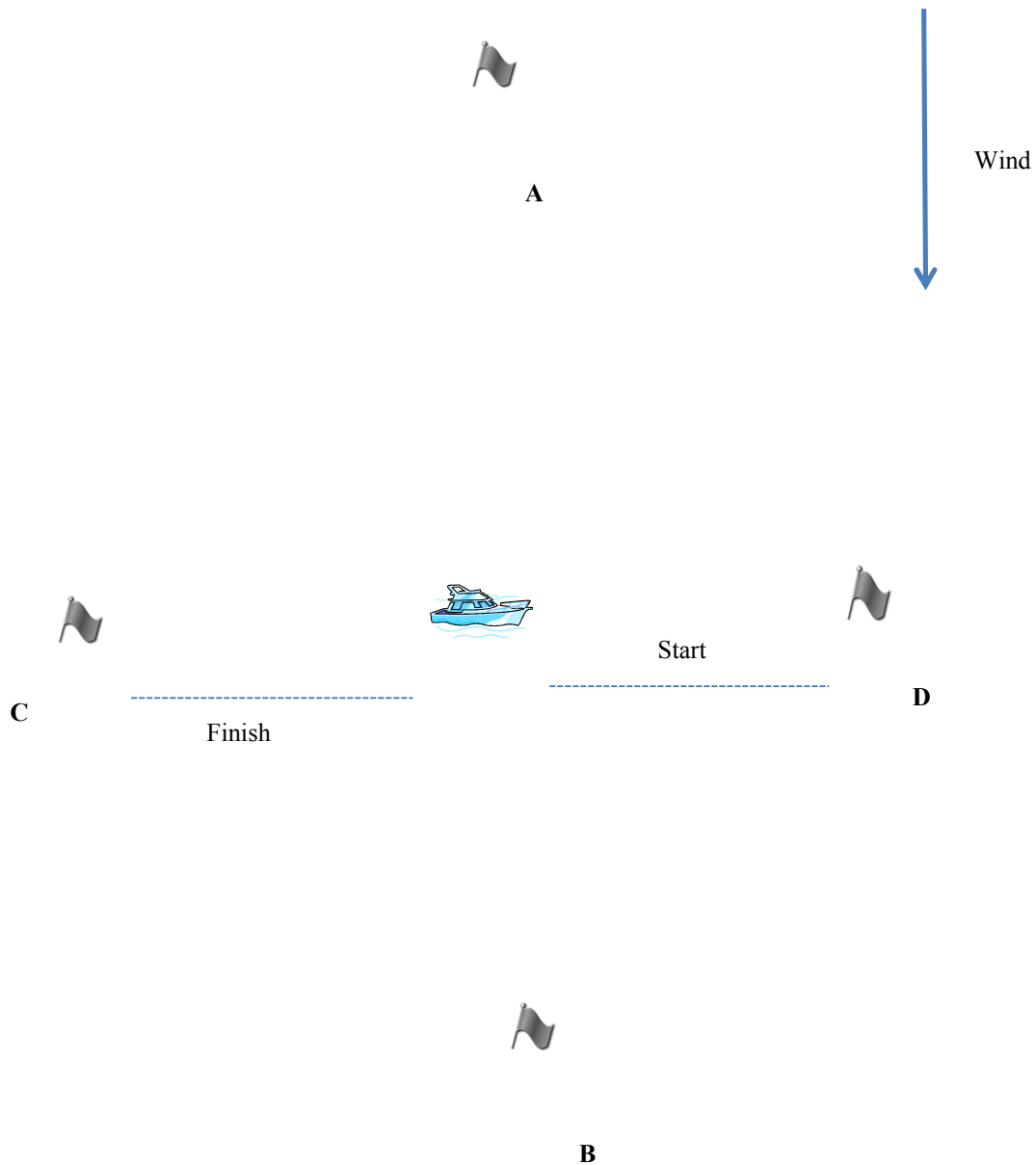
- A – Laid mark, in the vicinity of Jewfish Bay.
- B – Laid mark, in the vicinity between Macleans Point and Palm Beach
- C – Laid mark, in the vicinity of Oakey Lagoon
- D – Laid mark in the vicinity between Kangaroo Point and Maclean's Point.
- E – Laid Mark in the vicinity of Tallyan point.
- F – Cardinal mark off Garden Island.
- G – Laid Mark in the Vicinity of Ernie's
- H – Cardinal Mark off Macleans Point.
- I – Finish Line in the vicinity between Kangaroo Point and Maclean's Point.

Passage race starting at A and Finishing at I for all wind directions.

Course (All marks starboard rounding unless indicated – p)

Start A, B,C,A,D(p),E,F(p),G,H(p),B, Finish at I.

## Short Course



Course.

Port/Starboard rounding as indicated by Committee Boat.

Start Line Between Committee boat and D

Finish Line Between Committee boat and C

Start, A,B, Finish.

Note: **DO NOT** pass between Buoys C and D and the Committee boat except to start and finish.